



## Agent SNMP

The reliable solution to control, manage and monitor your computer or Power Conditioner!

HS Code : 85040

None

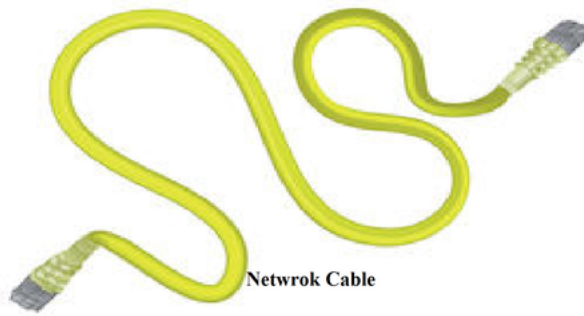
## The SNMP concepts

The SNMP model defines two entities, which works in a client-server mode.

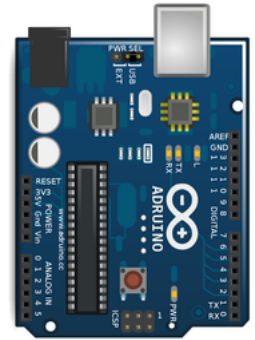
The SNMP server is called a SNMP agent and is located on the device to monitor. The client part is the SNMP manager in charge of the data collection and display. The SNMP version 3 names it the client entity instead of SNMP agent. The SNMP agent listens to requests coming from the SNMP manager on the UDP port 161, while the SNMP manager listens to alarms "TRAP" coming from the agent on port UDP 162.



Snmp Manager



Network Cable

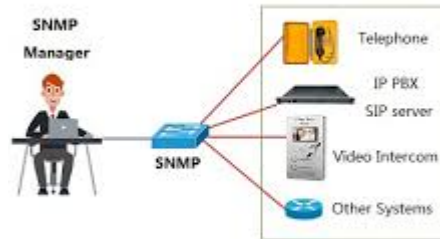


Snmp Agent

## The SNMP manager

The SNMP manager should be installed on a powerful system connected to the enterprise network. Another common name for it, is management station.

The SNMP manager job is to acquire with SNMP requests, information about devices connected to the network. Gathered information are then processed and displayed in tables, graphs, gauges, histograms, for an easier interpretation by human being.



Snmp Manager

The management station includes the following components:

The graphical user interface

Use to display in a friendly manner collected data.

The database

The database is used by the manager to store collected data.

The transport protocol

Protocol is used to communicate between manager and agent.

Le SNMP engine

This is the kernel of the application. It manages all the tasks like an orchestral chief.

Agent management profiles

This is a set of rules that defines how to access to the agents. All this profiles help to build the topology map.

The SNMP agent

The agent is a mix of software and hardware or only software and is located in the device. Most of network devices are equipped by default, other systems having a standard operating system are able to behave like an agent by running a simple process. Most of them, Windows platform, Novell Server, Unix and Linux systems own their agents. Hubs and MAU, for most of them are also manageable.

Agents are composed of:

A transport protocol stack	Responsible for sending and receiving SNMP packet
An SNMP engine	Process requests and formats data.
A management profiles	These are the rules that control access to MIB variables and manage which requests are authorized.

Perks

Views

Specifications Agent SNMP



**IPower International Ltd** [🌐](#)

**Address :** BPML Freeport Zone 6, Mer Rouge, Port Louis, Republic of Mauritius.

**Phone :** +230 5988 1999/ +230 5988 9080/ +230 5940 92 68

**Fax :** +230 216 6628

**Email :** [sales@ipower.re](mailto:sales@ipower.re) - [info@ipower.re](mailto:info@ipower.re)

Uninterruptible Power Supply (UPS), Automatic Voltage Regulator (AVR), Isolating Transformers & Maintenance free 12Vdc VRLA batteries manufacturer, distributor, installer & service provider

**BRN :** C15131905

**VAT :** VAT27357325